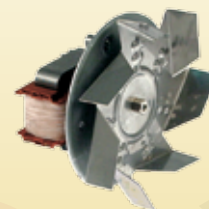
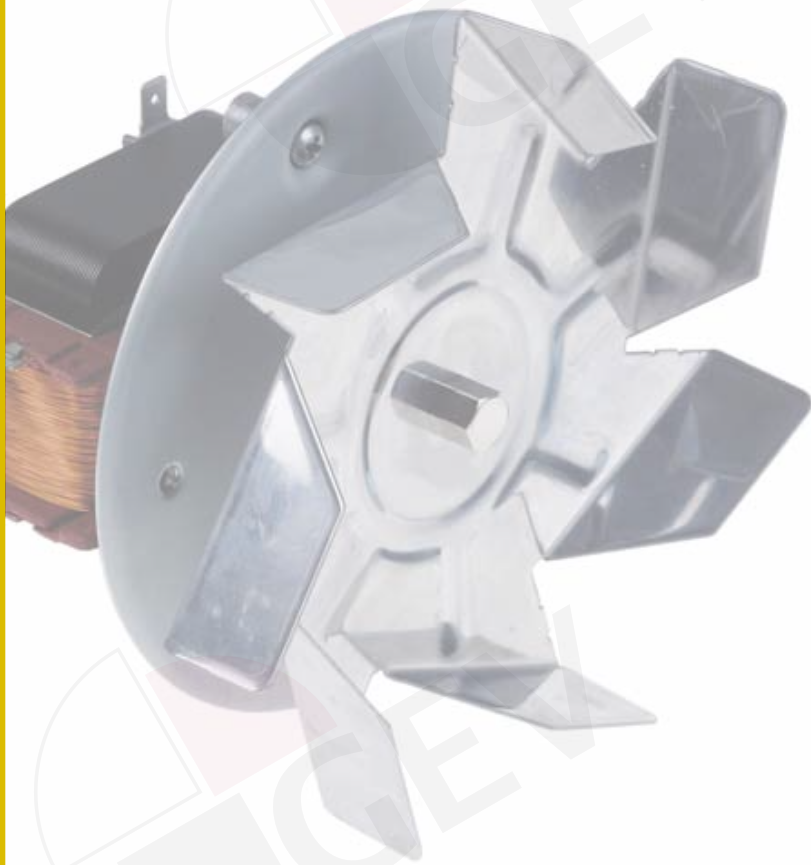


Fans

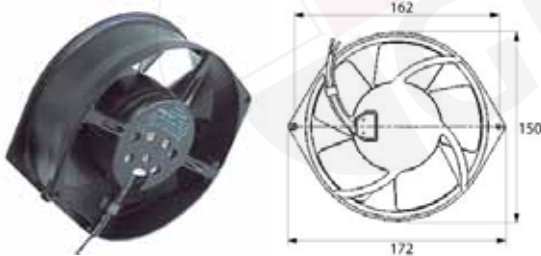
<i>Axial fans</i>	page 462
<i>Radial fans</i>	page 465
<i>Cooling fans</i>	page 467
<i>Cross flow fans</i>	page 473
<i>Heating units</i>	page 479
<i>Hot air fans</i>	page 480
<i>Hot air motors</i>	page 487



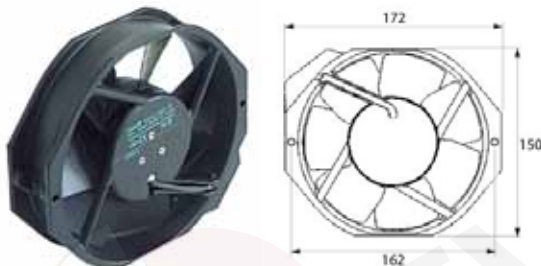
axial fans
EBM-Papst



No.	Part no.	L (mm)	B (mm)	H (mm)	voltage (V)	voltage type	freq. (Hz)	power (W)	bearing	connection	equiv. no.
1	601496	60	60	25	12	DC	-	0.8	ball bearing	cabl	612NME
2	601038	80	80	38	230	AC	50/60	12	ball bearing	cabl	8556N
3	601120	92	92	25	12	DC	-	2.4	ball bearing	cabl	3412
4	601074	92	92	25	24	DC	-	2.3	ball bearing	cabl	3414N
5	601632	92	92	25	24	DC	-	2.4	sliding bearing	cabl	3414G
6	601082	92	92	25	230	AC	50/60	9/11	ball bearing	Faston	3956
7	601633	92	92	38	230	AC	50	12	ball bearing	cabl	3656
8	601634	119	119	25	230	AC	50	14	ball bearing	Faston	9956
9	601121	119	119	38	12	DC	-	4.5	ball bearing	Faston	4182NX
10	601656	119	119	38	24	DC	-	12.5	ball bearing	cabl	4114NHH
11	601030	119	119	38	230	AC	50	18	ball bearing	Faston	4656Z
12	601458	119	119	38	230	AC	50	19	ball bearing	Faston	4656N
13	601482	119	119	38	230	AC	50/60	13	sliding bearing	cabl	4580ZW
14	601089	119	119	38	230	AC	50/60	19	sliding bearing	Faston	4650N
15	601635	127	127	38	230	AC	50	18	ball bearing	Faston	5958
16	601649	127	127	38	230	AC	50/60	18	ball bearing	cabl	5958W
17	601481	127	127	38	230	AC	50/60	18	sliding bearing	cabl	5950W



No.	Part no.	L (mm)	B (mm)	H (mm)	voltage (V)	voltage type	freq. (Hz)	power (W)	bearing	connection	equiv. no.
1	601631	172	150	55	230	AC	50	47	ball bearing	cabl	7450ES
2	601088	172	150	55	230	AC	50/60	39/45	ball bearing	cabl	7855ES

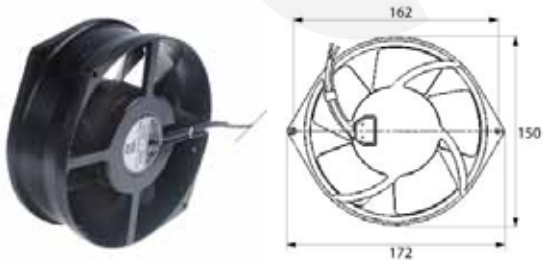


No.	Part no.	L (mm)	B (mm)	H (mm)	voltage (V)	voltage type	freq. (Hz)	power (W)	bearing	connection	equiv. no.
1	601113	172	150	38	230	AC	50/60	27/28	ball bearing	Faston	7056ES

import



No.	Part no.	L (mm)	B (mm)	H (mm)	voltage (V)	voltage type	freq. (Hz)	power (W)	bearing	connection
1	601655	40	40	20	12	DC	-	1.6	ball bearing	cable
2	601154	60	60	25	12	DC	-	-	ball bearing	cable
3	601336	60	60	25	24	DC	-	2.6	sliding bearing	cable
4	601155	60	60	25	24	DC	-	2.88	ball bearing	cable
5	601438	80	80	25	12	DC	-	4.6	ball bearing	cable
6	601335	80	80	25	24	DC	-	1.7	sliding bearing	cable
7	601439	80	80	25	24	DC	-	4.7	ball bearing	cable
8	601130	80	80	25	230	AC	50/60	13/14	ball bearing	cable
9	601081	80	80	38	230	AC	50/60	14/13.5	ball bearing	cable
10	601156	92	92	25	12	DC	-	4.9	ball bearing	cable
11	601157	92	92	25	24	DC	-	5	ball bearing	cable
12	601055	92	92	25	230	AC	50/60	14.5/14	ball bearing	Faston
13	601158	119	119	25	12	DC	-	3.7	ball bearing	cable
14	601159	119	119	25	24	DC	-	5	ball bearing	cable
15	601460	119	119	25	230	AC	50/60	14/16	ball bearing	Faston
16	601131	119	119	25	230	AC	50/60	19/18	ball bearing	cable
17	601161	119	119	38	12	DC	-	6.3	ball bearing	cable
18	601162	119	119	38	24	DC	-	6.5	ball bearing	cable
19	601510	119	119	38	230	AC	50/60	22/21	ball bearing	Faston
20	601604	119	119	38	230	AC	50/60	22/21	sliding bearing	Faston
21	601080	119	119	38	230	AC	50/60	23/20	ball bearing	Faston
22	601457	127	127	38	12	DC	-	12.72	ball bearing	cable



No.	Part no.	L (mm)	B (mm)	H (mm)	voltage (V)	voltage type	freq. (Hz)	power (W)	bearing	connection
1	601132	172	150	55	230	AC	50/60	40/46	ball bearing	cable
2	601500	172	150	55	230	AC	50/60	42	ball bearing	cable



No.	Part no.	L (mm)	B (mm)	H (mm)	voltage (V)	voltage type	freq. (Hz)	power (W)	bearing	connection
1	601133	162	150	55	230	AC	50/60	32/31	ball bearing	Faston
2	601388	172	150	38	230	AC	50/60	38/35	ball bearing	Faston
3	601473	172	150	55	230	AC	50/60	35	ball bearing	Faston
4	601654	172	151	51	220-240	AC	50/60	28/24	ball bearing	cable



No.	Part no.	D1 ø (mm)	H (mm)	voltage (V)	voltage type	power (W)	bearing	equiv. no.	connection
1	601468	172	55	24	DC	50	ball bearing	FDD24Z3A2	cable 300mm

accessories
ventilation grids



No.	Part no.	ø (mm)	BA (mm)	for axial fan (mm)
1	691102	75	71	80
2	691103	90	83	92

No.	Part no.	ø (mm)	BA (mm)	for axial fan (mm)
3	691104	115	105	119

connecting cables



No.	Part no.	cable length (mm)	connection
1	550898	3000	F 2.8

radial fans

burner blowers 1



No.	Part no.	voltage (V)	voltage type	freq. (Hz)	power (W)	suitable for	equiv. no.
1	601114	24	AC	-	20	Rational	3101.1011
2	500818	24	DC	-	23	Electrolux Zanussi	0C1051 0C1051
3	601245	24	DC	-	45	Ambach Lainox	R63130010 R63130010
4	500817	24	DC	-	55	Electrolux Zanussi	0C1112 0C1112



No.	Part no.	voltage (V)	voltage type	freq. (Hz)	power (W)	suitable for	equiv. no.
5	601115	24	DC	50	-	Rational	31011014
6	500798	230	AC	50	25	Rational	31011016
7	601238	230	AC	50	40	Electrolux Juno Zanussi	002639 02639 002639
8	601237	230	AC	50	47	Electrolux Zanussi	005745 005745



No.	Part no.	voltage (V)	voltage type	freq. (Hz)	power (W)	suitable for	equiv. no.
9	601295	230	AC	50	50	Rational	7000028
10	601599	230	AC	50	60	Angelo-Po	32V5830
11	601181	230	AC	50	100	MKN Convotherm	203994 5018000

burner blowers 2



No.	Part no.	voltage (V)	voltage type	freq. (Hz)	power (W)	suitable for	equiv. no.
1	691053	230	AC	50	200	Fagor	R723003
2	691058	230	AC	50	370	Fagor	T093001

No.	Part no.	voltage (V)	voltage type	freq. (Hz)	power (W)	suitable for	equiv. no.
3	691868	230	AC	60	200	Fagor	R723025
4	691867	230	AC	60	370	Fagor	T093002

other



No.	Part no.	voltage (V)	voltage type	freq. (Hz)	power (W)	suitable for	equiv. no.
1	601464	24	DC	-	26	TurboChef	T0262
2	601167	230	AC	50	-	Sharp	FMOTE4482WRKZ
3	601002	230	AC	50	12	Niggemann	-
4	601475	230	AC	50	20	MKN Palux	203926 752525
5	601337	230	AC	50	22	Berner	500103



No.	Part no.	voltage (V)	voltage type	freq. (Hz)	power (W)	suitable for	equiv. no.
6	601523	230	AC	50	50	Icematic SF-Maschinen	18562480/0 I-163

extractor fans
extractor fans



No.	Part no.	voltage (V)	power (W)	max. (A)	motor speed (rpm)	overall length (mm)	H (mm)
1	500896	230	184	1.8	1400	320	330
2	601508	230	420	3.6	1400	380	390
3	500882	230	515	4.9	900	490	520
4	601507	230	550	4.6	1400	430	450

speed controllers



1

2

3

No.	Part no.	voltage input	voltage output	power (W)	max. (A)	load current (A)
1	379625	230V/50Hz	115-230V/50Hz	1200	12	10
2	401658	230V/50Hz	46-138V/115-230V	1500	12	7.5
3	401659	230V/50Hz	46-138V/115-230V	2500	18	12

cooling fans

cold air fans



No.	Part no.	voltage (V)	freq. (Hz)	shaft length (mm)	shaft ø (mm)	type	suitable for	equiv. no.
1	601477	230	50-60	22	3	F61-10	Liebherr	6118791
2	601478	230	50-60	22	3	F61-10G	Liebherr	6118751
3	601479	230	50-60	22	3	F61-10G	Liebherr	6108993
4	601432	230	50-60	29	3	F61-10G	-	-

accessories

brackets for cold air fans



No.	Part no.	Description	suitable for	equiv. no.
1	691479	bracket for ventilator	Liebherr	7427579

No.	Part no.	Description	suitable for	equiv. no.
2	691478	bracket for ventilator	Liebherr	7422558

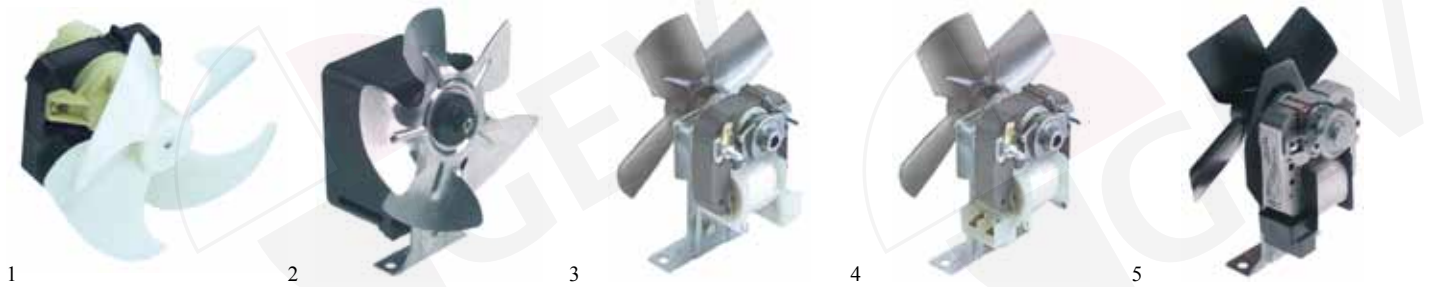
fan wheels for cold air fans



No.	Part no.	ø (mm)	B (mm)	shaft intake ø (mm)
1	601425	100	23	3

No.	Part no.	ø (mm)	B (mm)	shaft intake ø (mm)
2	601480	164	27	3

cold air fans complete



No.	Part no.	voltage (V)	power (W)	freq. (Hz)	D (mm)	shaft length (mm)	feet depth (mm)
1	601119	230	2	50/60	100	23	-
2	601019	230	3	50	130	26	27
3	601079	230	18	50	130	20	31

No.	Part no.	voltage (V)	power (W)	freq. (Hz)	D (mm)	shaft length (mm)	feet depth (mm)
4	601078	230	18	50	130	21	29
5	601501	230	25	50	135	24	25



No.	Part no.	voltage (V)	power (W)	freq. (Hz)	D (mm)	version
1	601039	230	10	50	96	sucking

No.	Part no.	voltage (V)	power (W)	freq. (Hz)	D (mm)	version
2	601056	230	10	50	96	blowing



No.	Part no.	voltage (V)	freq. (Hz)	power (W)	ø (mm)	H (mm)	manufacturer	type	suitable for	equiv. no.
1	601617	230	50	58	19	70	EBM	R2E190-AO26-66	Ilsa	00543
2	601536	230	50/60	58/75	190	70	EBM	R2E190-AO26-73	Electrolux Irinox Zanussi	0E5666 27450100 0E5666



No.	Part no.	voltage (V)	freq. (Hz)	power (W)	ø (mm)	manufacturer	type	suitable for	equiv. no.
1	601618	230	50	32	250	EBM	A4E250-AA04-01	Irinox	270222504
2	601620	230	50	58	300	EBM	A4E300-AB01-38	-	-
3	601624	230	50	65	330	EBM	S6E330-AP02-34	Polaris	1648112008
4	601619	230	50	68	300	EBM	A4E300-AP26-01	-	-
5	601622	230	50	95	315	EBM	A4E315-AC08-18	Afinox	74845072
6	601623	230	50	95	315	EBM	A4E315-AC08-19	Emmepi Ilsa Irinox Lainox Silko	771110007 31311 270223125 RA880046 RA880046
7	601625	230	50	110	330	EBM	A4E330-AP18-01	Irinox	270223310
8	601621	230	50	120	315	EBM	A4E315-AA05-01	Irinox	270233124
9	601626	230	50	130	350	EBM	A4E350-AP06-01	Afinox Irinox	74845074 270223507
10	601422	230	50	140	350	EBM	A4E350-AA06-01	Brema	23468
11	601627	230	50	160	400	EBM	A4E400-AP02-01	Afinox	74845078
12	601535	230	60	78	200	EBM	A2E200-AH38-09	Irinox	270222500



No.	Part no.	voltage (V)	freq. (Hz)	power (W)	ø (mm)	manufacturer	type
1	500881	400	50	-	-	-	-
2	601628	400	50	830	500	EBM	A4D500-AD03-01

cold air fans other

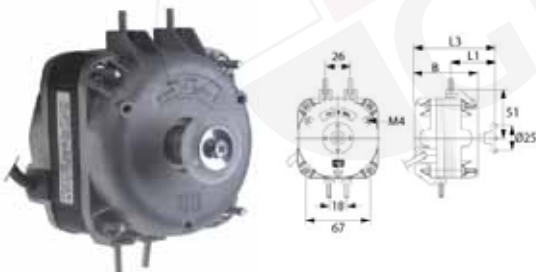


No.	Part no.	voltage (V)	freq. (Hz)	power (W)	B (mm)	H (mm)	D (mm)	shaft length (mm)	shaft ø (mm)	suitable for	equiv. no.
1	601540	115	60	-	98	97	155	40	10	Scotsman	1800550501
2	601532	220	50	-	64	125	-	27	-	Scotsman	0T05917200
3	601533	230	50	-	95	97	165	40	9	Scotsman	1800874002
4	601537	230	50/60	2	99	87	88	9.5	6	Scotsman	1200201502
5	601375	230	50/60	10	84	87	95	25	8	Desmon	R05-0139



No.	Part no.	voltage (V)	freq. (Hz)	power (W)	B (mm)	H (mm)	D (mm)	shaft length (mm)	shaft ø (mm)	suitable for	equiv. no.
6	601605	230	50-60	26	-	-	-	42	-	La-Sommeliere	A6002088
7	601554	230	50-60	100	105	105	220	80	12	Icematic	29020006/0

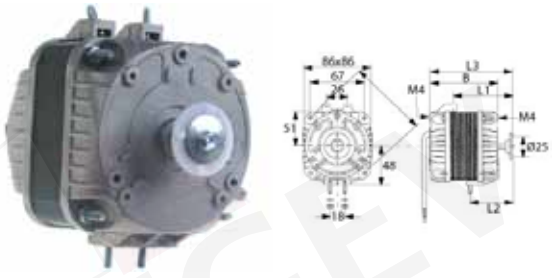
cold motors universal ELCO



No.	Part no.	power (W)	voltage (V)	L1 (mm)	L2 (mm)	L3 (mm)	cable length (mm)
1	601430	5	230	48	52	79.5	500
2	601427	10	230	49	59	86.5	500
3	601528	16	230	48	64	91.5	500

No.	Part no.	power (W)	voltage (V)	L1 (mm)	L2 (mm)	L3 (mm)	cable length (mm)
4	601529	25	230	53	84	111.5	500
5	601530	34	230	55.5	91.5	119	500

FMI



No.	Part no.	power (W)	voltage (V)	L1 (mm)	L2 (mm)	L3 (mm)	cable length (mm)
1	601330	5	230	51	51	81	500
2	601331	10	230	58	51	88	500
3	601332	16	230	67	55	97	500

No.	Part no.	power (W)	voltage (V)	L1 (mm)	L2 (mm)	L3 (mm)	cable length (mm)
4	601333	25	230	88	69	118	500
5	601334	34	230	88	63	118	500

import



No.	Part no.	power (W)	voltage (V)	L1 (mm)	L2 (mm)	L3 (mm)	cable length (mm)
1	601020	5	230	44	48	79	500
2	601022	10	230	44	54	85	500
3	601023	16	230	45	61	92	500

No.	Part no.	power (W)	voltage (V)	L1 (mm)	L2 (mm)	L3 (mm)	cable length (mm)
4	601024	25	230	49	80	112	500
5	601050	34	230	-	90	121	500

accessories

fan wheels

sucking



No.	Part no.	ø (mm)	blade angle (°)	material
1	601566	154	28	aluminium
2	601412	154	28	plastic
3	601135	154	34	aluminium
4	601069	172	25	aluminium
5	601553	172	28	aluminium
6	601385	172	34	aluminium
7	601423	200	26	plastic
8	601070	200	28	aluminium
9	601282	200	34	aluminium
10	601071	230	25	aluminium
11	601283	230	28	aluminium
12	601172	230	34	aluminium

No.	Part no.	ø (mm)	blade angle (°)	material
13	601567	250	28	aluminium
14	601072	254	22	aluminium
15	601409	254	25	aluminium
16	601284	254	28	aluminium
17	601414	254	31	aluminium
18	601387	254	34	aluminium
19	601415	275	34	aluminium
20	601073	300	22	aluminium
21	601555	300	25	aluminium
22	601410	300	28	aluminium
23	601416	300	31	aluminium
24	601542	350	-	aluminium

pushing



No.	Part no.	∅ (mm)	blade angle (°)	material
1	601568	154	28	aluminium
2	601569	172	28	aluminium
3	601570	200	28	aluminium
4	601571	230	28	aluminium
5	601386	230	31	aluminium

No.	Part no.	∅ (mm)	blade angle (°)	material
6	601572	250	28	aluminium
7	601573	254	28	aluminium
8	601556	254	31	aluminium
9	601574	300	28	aluminium

mounting rings

sucking



No.	Part no.	for fan wheel ∅ (mm)	∅ (mm)	H (mm)	mounting distance 1 (mm)
1	601585	154	200	49	190
2	601586	172	220	49	208
3	601587	200	246	49	236

No.	Part no.	for fan wheel ∅ (mm)	∅ (mm)	H (mm)	mounting distance 1 (mm)
4	601588	230	278	49	266
5	601589	254	303	49	290
6	601590	300	378	49	365

pushing



No.	Part no.	for fan wheel ∅ (mm)	∅ (mm)	H (mm)	mounting distance 1 (mm)
1	601591	154	200	27	190
2	601592	172	220	30	208
3	601593	200	246	28	236

No.	Part no.	for fan wheel ∅ (mm)	∅ (mm)	H (mm)	mounting distance 1 (mm)
4	601594	230	278	27	266
5	601595	254	303	27	290
6	601596	300	378	32	365

footing



No.	Part no.	H (mm)	BA (mm)
1	601597	39	78
2	601136	40	85

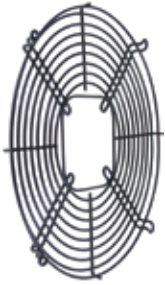
No.	Part no.	H (mm)	BA (mm)
3	601075	52	81
4	601575	55	81

No.	Part no.	H (mm)	BA (mm)
5	601137	70	85
6	601576	72	81

No.	Part no.	H (mm)	BA (mm)
7	601577	84	81
8	601076	84	81

No.	Part no.	H (mm)	BA (mm)
9	601077	109	-
10	601578	109	78

grid



No.	Part no.	for fan wheel ø (mm)	H (mm)	mounting distance 1 (mm)
1	601579	154	11	190
2	601580	172	11	208
3	601581	200	25	236

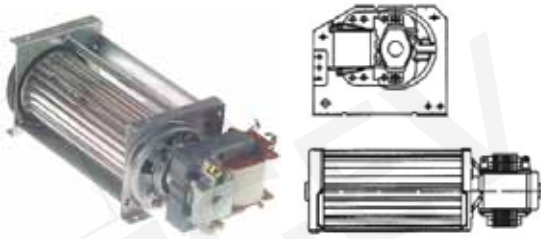
No.	Part no.	for fan wheel ø (mm)	H (mm)	mounting distance 1 (mm)
4	601582	230	27	266
5	601583	254	17	290
6	601584	300	17	344

cross flow fans
with heater battery
roller diameter ø60mm



No.	Part no.	RL (mm)	MP	voltage (V)	freq. (Hz)	power (W)	heat output (W)	suitable for	equiv. no.
1	601027	180	right	230	50	17	2000	Capito	63905

cross flow fan without heating element
roller diameter \varnothing 40mm



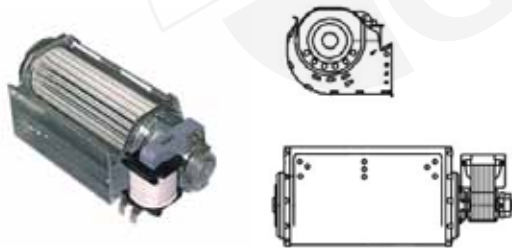
No.	Part no.	RL (mm)	roller \varnothing (mm)	MP	voltage (V)	freq. (Hz)	power (W)	application	bearing	suitable for	equiv. no.
1	601146	100	40	right	230	50	10	refrigeration	rubber	Küppersbusch	120111
2	601171	150	40	left	230	50	14	refrigeration	rubber	-	-
3	601297	200	40	right	230	50	13	refrigeration	rubber	Küppersbusch	178415
4	601652	250	40	right	230	50	15	universal	silicone	Infrico	304X39

roller diameter \varnothing 45mm
equipment-specific cross flow fans

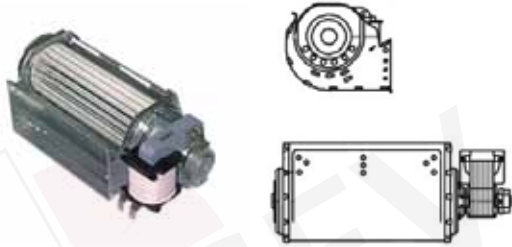


No.	Part no.	RL (mm)	roller \varnothing (mm)	MP	voltage (V)	freq. (Hz)	power (W)	application	bearing	suitable for	equiv. no.
1	601051	120	45	right	230	50	18	universal	silicone	Wiesheu	33547
2	601053	180	45	right	230	50	26	universal	silicone	Eloma Palux	E609045 370967

mounting version 1

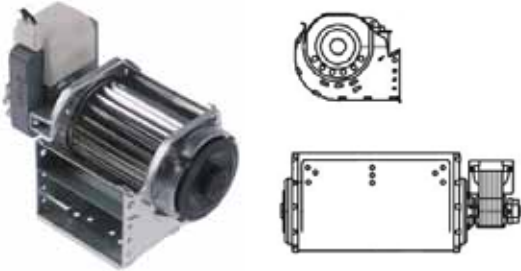


No.	Part no.	RL (mm)	roller \varnothing (mm)	MP	voltage (V)	freq. (Hz)	power (W)	application	bearing	suitable for	equiv. no.
1	601611	120	45	left	230	50	24	universal	silicone	-	-
2	601128	120	45	right	230	50	17	refrigeration	rubber	-	-
3	601454	120	45	right	230	50	17	universal	silicone	Electrolux Mareno Smeg Zanussi	031297 25909.00 695210323 081795
4	601248	180	45	left	230	50	26	universal	silicone	Rieber	33202210
5	601456	180	45	right	230	50/60	26	universal	silicone	Ascobloc Dexion Electrolux Küppersbusch Mobile Containing Palux Zanussi	8178463 01272600R 07800A8087 178352 957220 202428 0A8087
6	601612	240	45	left	230	50	25	universal	silicone	-	-
7	601613	240	45	right	230	50	25	universal	silicone	-	-
8	601102	300	45	left	230	50	35	refrigeration	rubber	Electrolux SSP Zanussi	0682301800 682301800 082730
9	601614	300	45	right	230	50	43	universal	silicone	-	-



No.	Part no.	RL (mm)	roller ø (mm)	MP	voltage (V)	freq. (Hz)	power (W)	application	bearing	suitable for	equiv. no.
10	601615	360	45	left	230	50	48	universal	silicone	-	-
11	601616	360	45	right	230	50	48	universal	silicone	-	-

mounting version 1 with hermetically sealed coil



No.	Part no.	RL (mm)	roller ø (mm)	MP	voltage (V)	freq. (Hz)	power (W)	application	bearing	connection	suitable for	equiv. no.
1	601000	60	45	left	230	50	15	refrigeration	rubber	cable	Polaris	1648106045

roller diameter ø60mm

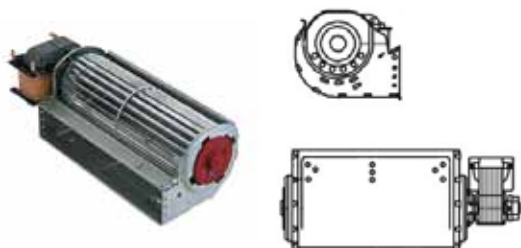
equipment-specific cross flow fans



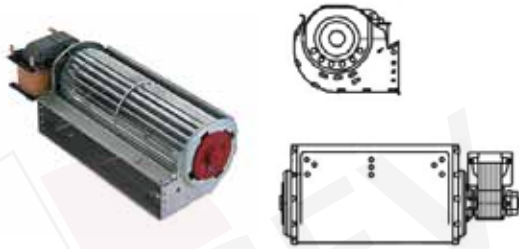
1

No.	Part no.	RL (mm)	roller ø (mm)	MP	voltage (V)	freq. (Hz)	power (W)	application	bearing	suitable for	equiv. no.
1	601602	180	60	left	230	50/60	27-32	refrigeration	silicone	La-Sommeliere	703835401

mounting version 1



No.	Part no.	RL (mm)	roller ø (mm)	MP	voltage (V)	freq. (Hz)	power (W)	application	bearing	suitable for	equiv. no.
1	601112	60	60	left	230	50	35	universal	silicone	Hanning Rational	QAX0606020 3101.1003
2	601047	60	60	right	230	50	17	refrigeration	rubber	Electrolux Juno	0700280024 0700280024
3	601033	90	60	right	230	50	17	refrigeration	rubber	-	-
4	601036	120	60	left	230	50	18	universal	silicone	Rational	3101.1004
5	601028	120	60	right	230	50	19	refrigeration	rubber	-	-
6	601032	180	60	left	230	50	17	refrigeration	rubber	Angelo-Po CB Eloma Mareno	32M0521 07012360 390023 25320599



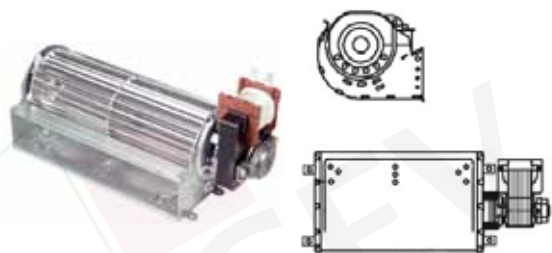
No.	Part no.	RL (mm)	roller ø (mm)	MP	voltage (V)	freq. (Hz)	power (W)	application	bearing	suitable for	equiv. no.
7	601452	180	60	left	230	50	22	universal	silicone	Rieber	33202202
8	601650	180	60	left	230	50/60	31	universal	silicone	Infrico	304X25
9	601561	180	60	left	230	50-60	14	universal	silicone	Piron	MOT30001
10	601031	180	60	right	24	50	-	refrigeration	rubber	-	-
11	601025	180	60	right	230	50	17	refrigeration	rubber	IME Turbo Mareno Philipp Kirsch	TKS00020 MA25320500 270127
12	601453	180	60	right	230	50	17	universal	silicone	Bartscher Electrolux Emmepi Küppersbusch Morice RSI Scotsman Zanussi	030008386 005204 827914 178410 DE0155 30008386 91476111 005204
13	601018	180	60	right	230	50	25	universal	silicone	La-Sommeliere Tecnoeka	A6002035 09950337000
14	601437	180	60	right	230	50	31	refrigeration	rubber	Salvis	1V422429
15	601105	180	60	right	230	50	33	refrigeration	rubber	-	-
16	601651	240	60	left	220/230	50/60	38	universal	silicone	Infrico	304X28
17	601106	240	60	right	230	50	40	refrigeration	rubber	-	-
18	601107	270	60	right	230	50	35	refrigeration	rubber	-	-
19	601101	300	60	left	230	50	35	refrigeration	rubber	Electrolux Küppersbusch Zanussi	0682705300 174259 083737
20	601108	360	60	right	230	50	50	refrigeration	rubber	-	-

mounting version 1 with hermetically sealed coil



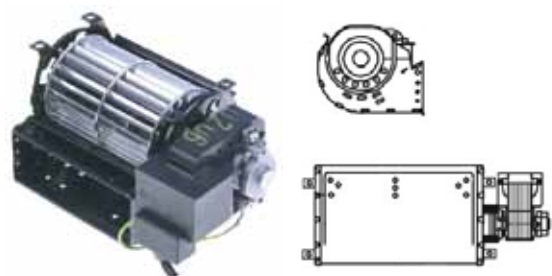
No.	Part no.	RL (mm)	roller ø (mm)	MP	voltage (V)	freq. (Hz)	power (W)	application	bearing	connection	suitable for	equiv. no.
1	601291	180	60	left	220-240	50	32	universal	silicone	F 6.3	Mercatus	40701006
2	601398	180	60	left	230	50	28	refrigeration	rubber	cable	Friulinox Tecfrigo	995634 B5102
3	601290	180	60	right	230	50	32	universal	silicone	F 6.3	Mercatus	40701008
4	601057	270	60	left	230	50	-	refrigeration	rubber	cable	IME Turbo	TKS00112
5	601399	270	60	left	230	50	49	refrigeration	rubber	cable	Friulinox	995773
6	601058	300	60	left	230	50	34	refrigeration	rubber	cable	IME Turbo	TKS0112

mounting version 2 with side straps



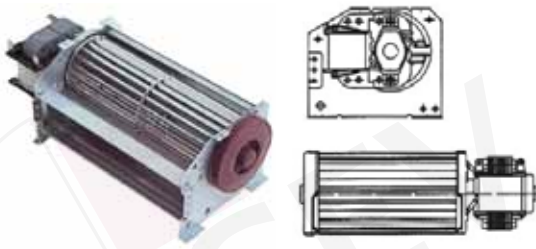
No.	Part no.	RL (mm)	roller ø (mm)	MP	voltage (V)	freq. (Hz)	power (W)	application	bearing	suitable for	equiv. no.
1	601646	180	60	left	230	50	25	universal	silicone	-	-
2	601340	180	60	right	230	50	30	universal	silicone	CB	07012360
3	601153	180	60	right	230	50	38	refrigeration	rubber	Groen	G4021065
4	601647	300	60	left	230	50	45	universal	silicone	-	-
5	601194	300	60	right	230	50	38	universal	silicone	Tecnoeka	09951057000

mounting version 2 with side straps and hermetically sealed coil



No.	Part no.	RL (mm)	roller ø (mm)	MP	voltage (V)	freq. (Hz)	power (W)	application	bearing	connection	suitable for	equiv. no.
1	601640	90	60	left	230	50	18	refrigeration	rubber	cable	-	-
2	601547	90	60	right	230	50-60	18	universal	silicone	cable	Scotsman	91476110
3	601641	120	60	left	230	50	19	refrigeration	rubber	cable	-	-
4	601637	120	60	right	230	50	19	refrigeration	rubber	cable	-	-
5	601176	180	60	left	230	50	-	refrigeration	rubber	cable	Friulinox Polaris	995634 1648106018
6	601110	180	60	left	230	50	40	refrigeration	rubber	cable	ArtSerf Mondial Polaris	3420010 4022142 1648106018
7	601636	180	60	right	230	50	25	refrigeration	rubber	cable	-	-
8	601642	240	60	left	230	50	25	refrigeration	rubber	cable	-	-
9	601638	240	60	right	230	50	25	refrigeration	rubber	cable	-	-
10	601643	270	60	left	230	50	45	refrigeration	rubber	cable	-	-
11	601639	270	60	right	230	50	40	refrigeration	rubber	cable	-	-
12	601644	300	60	left	230	50	43	refrigeration	rubber	cable	-	-
13	601600	300	60	right	230	50	55	universal	silicone	cable	La-Sommeliere	CF100039
14	601434	300	60	right	230	50/60	-	refrigeration	rubber	cable	Friulinox	935581
15	601111	360	60	left	230	50	60	universal	silicone	cable	-	-

mounting version 3



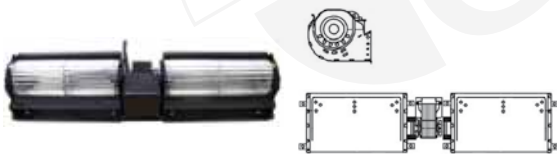
No.	Part no.	RL (mm)	roller ø (mm)	MP	voltage (V)	freq. (Hz)	power (W)	application	bearing	suitable for	equiv. no.
1	601279	60	60	right	220-240	50	-	universal	silicone	Scholl	72.10.07
2	601005	180	60	left	230	50	22	refrigeration	rubber	-	-
3	601006	180	60	right	230	50	22	universal	silicone	MKN Scholl	203138 72.10.09

twin fans mounting version 1



No.	Part no.	RL (mm)	roller ø (mm)	MP	voltage (V)	freq. (Hz)	power (W)	application	bearing	suitable for	equiv. no.
1	601455	2x180	60	centre	230	50	30	universal	silicone	Mareno	1215500
2	601037	2x180	60	centre	230	50	44	universal	silicone	Mareno	1215500
3	601026	2x180	60	centre	230	50	50	refrigeration	rubber	Angelo-Po Electrolux Therma	32M1220 077000129623 22129623

twin fans mounting version 2 with side straps and hermetically sealed coil



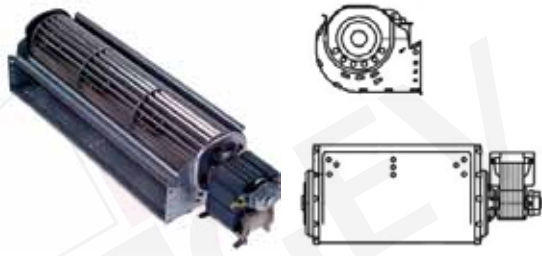
No.	Part no.	RL (mm)	roller ø (mm)	MP	voltage (V)	freq. (Hz)	power (W)	application	bearing	suitable for	equiv. no.
1	601645	2x180	60	centre	230	50		refrigeration	rubber	Tecfrigo	B5105

twin fans mounting version 3



No.	Part no.	RL (mm)	roller ø (mm)	MP	voltage (V)	freq. (Hz)	power (W)	application	bearing	suitable for	equiv. no.
1	601274	2x180	60	centre	230	50	36	universal	silicone	Scholl	72.10.11

roller diameter $\varnothing 65\text{mm}$
mounting version 1



No.	Part no.	RL (mm)	roller \varnothing (mm)	MP	voltage (V)	freq. (Hz)	power (W)	application	bearing	suitable for	equiv. no.
1	601505	240	65	right	230	50	-	universal	silicone	Palux	679178
2	601174	300	65	right	230	50/60	53	universal	silicone	Electrolux	0G2872

accessories for cross flow fans
heating registers



No.	Part no.	voltage (V)	power (W)	H (mm)	B (mm)	BA (mm)	TR (°C)	HC	connection	cable length (mm)
1	418629	230	300	40	35	170	95	2	flat plug 6.3mm	-
2	415121	230	2000	35	38	185	-	2	cable	150
3	415114	230	2000	35	40	185	105	2	cable	150
4	415122	230	2000	35	40	185	105	2	cable	340
5	415115	230	2000	40	38	185	190	2	flat plug 6.3mm	-

heating units
for heating cabinets



No.	Part no.	application	power (W)	voltage (V)	freq. (Hz)	L (mm)	B (mm)	H (mm)	temperature range (°C)	MP
1	418863	for hot cupboard	2000	230	50	278	310	92	30-90	floor mounting
2	418864	for hot cupboard	2000	230	50	300	190	130	30-90	wall-mounted

hot air fans with heating element



No.	Part no.	voltage (V)	freq. (Hz)	power (W)	L (mm)	B (mm)	D (mm)
1	601255	115/230	50/60	1600	240	240	85
2	601256	115/230	50/60	1700	240	240	85
3	601251	115/230	50/60	2400	240	240	85

No.	Part no.	voltage (V)	freq. (Hz)	power (W)	L (mm)	B (mm)	D (mm)
4	601257	115/230	50/60	2400	240	240	85
5	601263	230	50	1600	245	200	95



No.	Part no.	voltage (V)	freq. (Hz)	power (W)	L (mm)	B (mm)	D (mm)
6	601250	230	50	2400	235	235	115

hot air fans with heating element and control



No.	Part no.	voltage (V)	freq. (Hz)	power (W)	L (mm)	B (mm)	D (mm)
1	601521	230	50/60	810	270	240	100

hot air fans
EBM-Papst



No.	Part no.	voltage (V)	power (W)	L1 (mm)	L2 (mm)	L3 (mm)	L4 (mm)	D (mm)	type	suitable for	equiv. no.
1	601266	120/240		50	8	17	47	120	EM3010L-19	Rieber	59050501



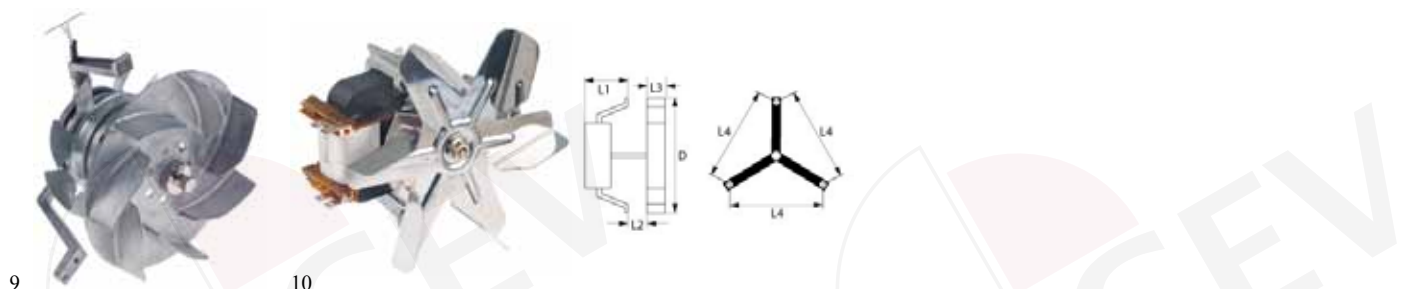
No.	Part no.	voltage (V)	power (W)	L1 (mm)	L2 (mm)	L3 (mm)	L4 (mm)	D (mm)	type	suitable for	equiv. no.
1	601272	220-230	47	65	17	28	157	150	R2K150-AA21-13	Köhler Esback	3000070/1
2	601249	230	32	60	20	20	157	150	R2K150-AC01-15	Blanco Rieber Stahl	105786 33202222 161030
3	601014	230	32	60	28	20	157	150	R2K150-AC01-25	Morice	DE0684
4	601267	230	32	60	50	20	157	150	R2K150-0020A9	Blanco	00106188



No.	Part no.	voltage (V)	power (W)	L1 (mm)	L2 (mm)	L3 (mm)	L4 (mm)	D (mm)	type	suitable for	equiv. no.
1	601252	115/230	30/35	53	7	20	87	150	R2K150-AC43-65	Rieber	33202223
2	601264	115/230	32	58	20	-	87	-	EM4218-405 bu	Rieber	33202227
3	601265	120/240	45	65	20	-	130	-	RRC/B45 3030LH4	Rieber	33202215
4	601059	220-230	36	60	10	20	87	150	R2K150-AN27-17	Eloma Palux	390021 647896



No.	Part no.	voltage (V)	power (W)	L1 (mm)	L2 (mm)	L3 (mm)	L4 (mm)	D (mm)	type	suitable for	equiv. no.
5	601513	220-240	41	60	11	25	87	155	RRL140/0024 A36	Fagor	6021050005
6	601254	230	32	58	12	20	87	150	R2A150/0020A7-4218	Blanco	00105913
7	601198	230	38	65	20	25	130	153	RRC140/0024A18	Electrolux Zanussi	054842 054842
8	601151	230	46	-	21	-	-	150	R2S150-AC08-09	Roka	8900360



No.	Part no.	voltage (V)	power (W)	L1 (mm)	L2 (mm)	L3 (mm)	L4 (mm)	D (mm)	type	suitable for	equiv. no.
9	601013	230	46	60	20	25	155	150	R2S150-AA08-29	Rieber Stahl	33202209 161.030
10	601253	240	30	58	10	20	88	150	R2K150-AC03-75	Hupfer	014001013



No.	Part no.	voltage (V)	power (W)	L1 (mm)	L2 (mm)	L3 (mm)	L4 (mm)	D (mm)	type	suitable for	equiv. no.
1	601103	230	47	-	-	-	157	150	G2S150-AB08-44	CB Tecnoinox	07010007 00229
2	601659	230	52	45	28	20	157	150	G2S150-AB08-43	Niggemann	60701335



No.	Part no.	voltage (V)	power (W)	distance fan wheel - fixing (mm)	BA (mm)	type	suitable for	equiv. no.
1	601258	120/240	8	10	47	EM3010L-19	Rieber	33200403
2	601294	230	50	10	47	EM3038LH-20	Küppersbusch	115971

HANNING



No.	Part no.	voltage (V)	L1 (mm)	L2 (mm)	L4 (mm)	suitable for	equiv. no.
1	601008	230	72	28	130	Hanning Küppersbusch	EMB30027 174192
2	601149	230	72	69	130	Hanning Küppersbusch	EMB30028 174193

HEIDOLPH



No.	Part no.	voltage (V)	power (W)	L1 (mm)	L2 (mm)	L3 (mm)	L4 (mm)	D (mm)	suitable for	equiv. no.
1	601268	230	27	80	5	30	120	150	Blanco	105671
2	601016	230	45	80	5	26	120	150	-	-



1

No.	Part no.	voltage (V)	power (W)	distance fan wheel - fixing (mm)	BA (mm)	type	suitable for	equiv. no.
1	500147	230	37	40	28	113.30.000431B	Electrolux Juno	0H6926 0H6926

other



1

2

3

4

No.	Part no.	voltage (V)	power (W)	L1 (mm)	L2 (mm)	L3 (mm)	L4 (mm)	D (mm)	suitable for	equiv. no.
1	601462	180	-	91	5	40	95	180	TurboChef	NGC-1025
2	601465	180	-	91	5	45	95	170	TurboChef	HHB-8106
3	601471	180	-	91	7	43	95	160	TurboChef	100444
4	601531	220	30	70	12	30	87	155	Emainox	3740035



5

6

7

8

No.	Part no.	voltage (V)	power (W)	L1 (mm)	L2 (mm)	L3 (mm)	L4 (mm)	D (mm)	suitable for	equiv. no.
5	601364	220	35	71	10	30	87	152	Smeg	20874
6	601125	220	45	70	11	25	87	150	Bartscher Bertos Foinox Olis Tecnoeka Unox	0A036410 23118000 0016 A036410 11950057000 VN050
7	601383	220	55	65	15	25	87	150	Smeg	699250031
8	601164	220-240	24-28	62	13	25	87	150	-	-



9

10

No.	Part no.	voltage (V)	power (W)	L1 (mm)	L2 (mm)	L3 (mm)	L4 (mm)	D (mm)	suitable for	equiv. no.
9	601124	220-240	30	60	12	25	84	150	Bartscher MBM Italien	009G623 9343420000
10	601562	220-240	30	60	13	25	87	150	Piron	MOT30003



No.	Part no.	voltage (V)	power (W)	L1 (mm)	L2 (mm)	L3 (mm)	L4 (mm)	D (mm)	suitable for	equiv. no.
10	601562	220-240	30	60	13	25	87	150	Piron	MOT30003
11	601054	220-240	32	60	10	25	87	150	Ambach Bartscher Bertos Giga Lainox Mareno MBM Italien Smeg Star10	5062114289 023117700 23117700 X68003 R650600400 1037117200 RTFOC00623 699250005 X68003
12	601273	220-240	32	60	10	25	87	155	Electrolux Juno Modular Multinox Sogeco	0K3048 0K3048 M569010100 569010100 MOTOVENTILATORE
13	601448	220-240	32	60	11	25	87	155	Giga	V03000



No.	Part no.	voltage (V)	power (W)	L1 (mm)	L2 (mm)	L3 (mm)	L4 (mm)	D (mm)	suitable for	equiv. no.
14	601163	220-240	32	60	21	20	87	150	-	-
15	601440	220-240	32	60	32	20	87	150	-	-
16	601451	220-240	38	70	10	20	87	150	Angelo-Po Electrolux Zanussi	32M0360 031484 031484
17	601548	220-240	40	65	11	25	87	150	Bartscher Rieber Roller-Grill	A0000103006 33202215 A03006



No.	Part no.	voltage (V)	power (W)	L1 (mm)	L2 (mm)	L3 (mm)	L4 (mm)	D (mm)	suitable for	equiv. no.
18	601011	220-240	40	65	15	25	87	150	Electrolux Olis Silko Tecnoinox Zanussi	004933 6A036410 0101342 00565 004933
19	601123	220-240	48/55	80	12	20	87	150	Modular Star10	66402500 079510
20	500697	220-240	55	70	13	-	87	150	Smeg	699250108
21	601184	230	-	82	15	25	87	150	Lotus	537006800



No.	Part no.	voltage (V)	power (W)	L1 (mm)	L2 (mm)	L3 (mm)	L4 (mm)	D (mm)	suitable for	equiv. no.
1	601271	220-230	38	65	25	20	87	150	Mobile Containing	957225
2	601199	220-240	24-28	60	25	-	87	-	Electrolux Zanussi	005202 005202
3	601147	220-240	32	65	10	20	87	15	Coldmaster Tecfrigo	D0702 D0702
4	601012	230	25	65	16	20	80/80/97	150	CB	07010013

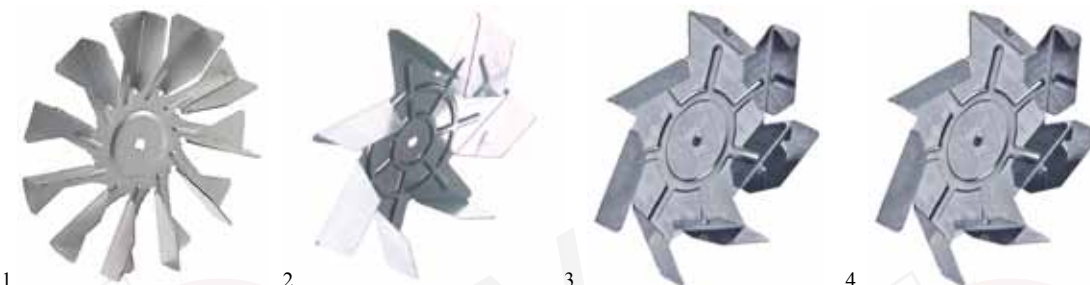


No.	Part no.	voltage (V)	power (W)	D (mm)	suitable for	equiv. no.
1	500128	230	120	180	Franke	295.101



No.	Part no.	voltage (VAC)	power (W)	MP	L1 (mm)	L2 (mm)	L3 (mm)	L4 (mm)	D (mm)	suitable for	equiv. no.
1	601660	180	250	bottom	88	18	52	100	97	TurboChef	i5-9042
2	601661	180	250	upper	88	18	52	100	97	TurboChef	i5-9040

accessories
fan wheels for hot air fans



No.	Part no.	ø (mm)	B (mm)	shaft intake ø (mm)	suitable for	equiv. no.
1	601259	120	16	6x5	Rieber	33200404
2	601200	145	25	6x5	Electrolux Smeg Zanussi	005221 039290121 005221
3	601441	145	25	6x5	-	-
4	601630	145	25	6x5	Mareno	MA1034400200



No.	Part no.	ø (mm)	B (mm)	shaft intake ø (mm)	suitable for	equiv. no.
5	601196	150	20	6x5	Küppersbusch	788878002
6	601085	150	26	7	-	-
7	601148	152	20	6x5	Küppersbusch Rieber	174220 33200402
8	601261	154	25	6x5	Rieber	33202216
9	691432	170	42.5	25	TurboChef	605-0069



No.	Part no.	ø (mm)	B (mm)	shaft intake ø (mm)	suitable for	equiv. no.
10	601346	180	27	7	Electrolux Juno	0H6951 0H6951

miscellaneous

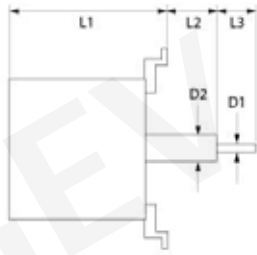


No.	Part no.	Description
1	601447	fixing plate L 170mm W 170mm for hot air fan
2	550879	insulation ø 130mm thickness 3mm hole ø 20mm
3	601262	knurled nut ø 20mm thickness 9mm M6L IG
4	601086	knurled screw ø 20mm thickness 10mm
5	601260	nut M6L IG for hot air fan



No.	Part no.	Description
6	211088	protective grid L 155mm W 155mm for fan

hot air motors
CROMPTON



No.	Part no.	voltage (V)	ph	freq. (Hz)	P (kW)	motor speed (rpm)	V	L1 (mm)	L2 (mm)	L3 (mm)	D1 ø (mm)	D2 ø (mm)	suitable for	equiv. no.
1	500653	230	1	50	0.06/0.19	930/1425	2	150	52	35	10	16	Electrolux Zanussi	005748 005748
2	500814	230	1	50/60	0.19	1400/1700	1	145	51	35	10	16	Electrolux Zanussi	005750 005750

EBM-Papst



1

No.	Part no.	voltage (V)	ph	freq. (Hz)	P (kW)	motor speed (rpm)	V	L1 (mm)	L2 (mm)	L3 (mm)	L4 (mm)	type	suitable for	equiv. no.
1	601301	100-240	1	50	0,45	2000	1	160	-	-	-	M3G084-FA22-16	Rational	4000274

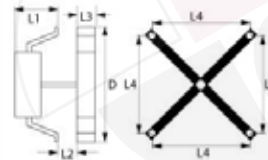
with fan wheel



1

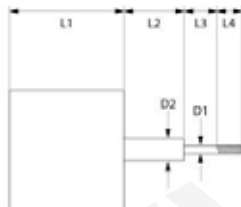
2

3

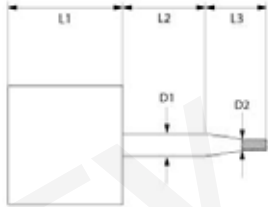


No.	Part no.	voltage (V)	ph	freq. (Hz)	P (kW)	motor speed (rpm)	V	L1 (mm)	L2 (mm)	L3 (mm)	L4 (mm)	type	suitable for	equiv. no.
1	500106	230	1	50	0,12	2600	1	100	34	33	178	R2E180-AH05-06	Capic Eloma	13390026 390006
2	601122	230	1	50	0,12	2650	1	100	34	33	178	R2E180-AH05-10	Roller-Grill	A03010
3	500107	230	1	50	0,25	2700	1	100	99	63	178	R2D225-AG02-10	-	-

FIR

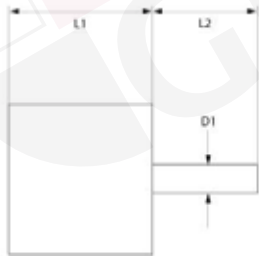


No.	Part no.	voltage (V)	ph	freq. (Hz)	P (kW)	motor speed (rpm)	V	L1 (mm)	L2 (mm)	L3 (mm)	L4 (mm)	D1 ø (mm)	D2 ø (mm)	suitable for	equiv. no.
1	601195	220-240	1	50/60	0.12	2800/3400	1	95	32	23	12	7x8	10	FIR Tecnoeka	1004.2455 09951627000
2	601648	220-240	1	50/60	0.12	2800/3400	1	105	32	23	12	6x8	9.5	FIR Tecnoeka	1004.2456 09954527000
3	601449	220-240/380-415	3	50	0.19	1350	1	105	74	35	12	9/10	12	Electrolux FIR Zanussi	058667 MT030822161 058667

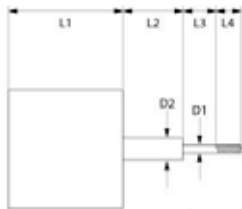


No.	Part no.	voltage (V)	ph	freq. (Hz)	P (kW)	P (HP)	motor speed (rpm)	V	L1 (mm)	L2 (mm)	L3 (mm)	D1 ø (mm)	D2 ø (mm)	suitable for	equiv. no.
1	601092	200-240	1	50	-	0.1/0.25	900/1400	2	123	41	30	15	10	FIR Gico	1071 293200420
2	500134	200-240	1	50/60	-	0.25	1400/1700	1	115	77	30	15	12	FIR Lainox	1060.1950 R50405225
3	601090	200-240	1	50/60	-	0.25	1400/1700	1	123	41	30	15	10	FIR Gico	1071 293200840
4	500661	220-240	1	50	-	0.05/0.25	1400/2700	2	123	77	30	15	12	Ambach FIR Lainox	R65040431 1057D1901 R65040431
5	500640	220-240	1	50	-	0.05/0.25	1400/2700	2	145	65	35	15	12	FIR Giorik	2758D2253 6032122
6	500133	220-240	1	50	-	0.1/0.25	900/1400	2	123	77	30	15	12	FIR Lainox	1061.1950 R30405215
7	601043	220-240	1	50	-	0.1/0.5	1400/2700	2	123	107	15	15	12	Bertos FIR Foinox Lainox	23118300 1057.1624 0764 R65040260
8	601379	220-240	1	50	0.074/0.37	-	1400/2800	2	145	77	45	15	12	FIR MBM Italien	1075.3163 168843
9	601166	220-240	1	50	0.37	-	2700	1	123	77	30	15	12	FIR Foinox	1057.2157 10705
10	601231	220-240	1	50	0.37	-	2800	1	145	77	47	15	12	FIR MBM Italien	1057A2157 168844
11	500663	230	1	50	-	0.25	2800	1	123	77	30	15	12	Ambach FIR Lainox	R65040421 1057C2401 R65040421
12	500680	230	3*	50	0.37	-	2800	1	121	77	31	16	11	FIR Lainox	1057 R65040420

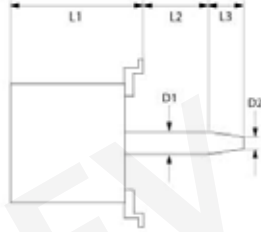
* Three-phase 230V-motors can also be connected to single-phase 230V mains, by use of a capacitor. Note: This reduces motor's performance.



No.	Part no.	voltage (V)	ph	freq. (Hz)	P (HP)	motor speed (rpm)	V	L1 (mm)	L2 (mm)	D1 ø (mm)	suitable for	equiv. no.
1	500491	220-240	1	50	0.25	2700	1	114	80	12	FIR Modular	1571 66400000



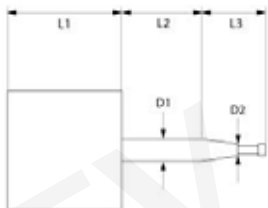
No.	Part no.	voltage (V)	ph	freq. (Hz)	P (kW)	motor speed (rpm)	V	L1 (mm)	L2 (mm)	L3 (mm)	L4 (mm)	D1 ø (mm)	D2 ø (mm)	suitable for	equiv. no.
1	601382	230	1	50	0.08	2750	1	85	30	23	12	6	8	FIR Smeg	3002 795210307
2	601362	230	1	50	0.12	2800	1	95	30	23	12	6	8	FIR Smeg	3003 51137



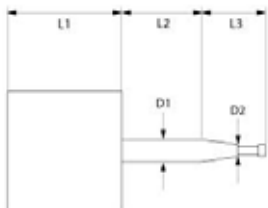
No.	Part no.	voltage (V)	ph	freq. (Hz)	P (kW)	P (HP)	motor speed (rpm)	V	L1 (mm)	L2 (mm)	L3 (mm)	D1 ø (mm)	D2 ø (mm)	suitable for	equiv. no.
1	500135	200-240	1	50	0.185/0.55	-	900/1400	2	195	45	47	24	20	Ambach FIR Lainox	R65040031 1063D2250 R50405235
2	500681	200-240	1	50	0.37	-	1400	1	265	45	47	24	20	FIR Zanolli	1021S2252 MOTO0030
3	601093	200-240/415	3	50	-	0.3/1	900/1400	2	210	50	45	24	20	FIR Gico	1041A4450 293201150
4	500137	200-240/415	3	50	0.185/0.55	-	900/1400	2	190	45	47	24	20	Ambach FIR Lainox	R65040051 1063.46T R65040051
5	601091	200-240/415	3	50/60	-	1	1400/1700	1	210	45	47	24	20	FIR Gico	1040A4450 293200190
6	601356	220-240	1	50	0.37	-	1400	1	168	45	47	24	20	FIR Gierre	1021S2250 MOT103
7	500136	220-240	1	50/60	0.55	-	1400/1700	1	190	47	47	24	20	Ambach FIR Lainox	R65040041 1063/4M R65040041
8	500664	230	1	50	0.37	-	1400	1	170	50	28	17	12	FIR Zanolli	1020A2353 MOTO0034
9	601544	230/400	3	50	-	0.5	1350	1	168	45	27	24	20	FIR Gierre	1021A5350 MOT101
10	500630	230/400	3	50	0.37	-	2600	1	175	50	28	17	12	FIR Inoxtrend Whirlpool	1020.5450 RRC2901-00 483286008681
11	601240	230/400	3	50	0.55	-	1400	1	150	45	47	24	20	FIR Moretti	1022 74015370
12	500631	230/400	3	50	0.55	-	2800	1	185	45	47	24	20	FIR Inoxtrend	3011.4050 RRC7160-00



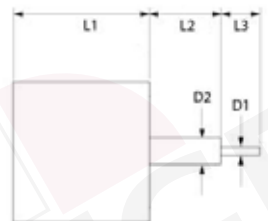
No.	Part no.	voltage (V)	ph	freq. (Hz)	P (kW)	motor speed (rpm)	V	L1 (mm)	L2 (mm)	L3 (mm)	D1 ø (mm)	D2 ø (mm)	suitable for	equiv. no.
1	500656	200-240/415	3	50	0.15/0.55	900/1400	2	150	50	48	24	20	FIR Lainox	3042D4050 R65040520
2	500131	230	1	50	0.37	1350	1	170	55	63	24	12	FIR Mareno	1090 5163900
3	500659	230	1	50/60	0.55	1400/1700	1	150	52	45	24	20	Ambach FIR Lainox	R65040550 3042A2350 R65040550



No.	Part no.	voltage (V)	ph	freq. (Hz)	P (kW)	P (HP)	motor speed (rpm)	V	L1 (mm)	L2 (mm)	L3 (mm)	D1 ø (mm)	D2 ø (mm)	suitable for	equiv. no.
1	601211	230/400-415	3	50/60	0.25	-	1400/1600	1	175	70	27	17	12	Angelo-Po FIR	32M3820 1046.4530
2	601212	380-400-415	3	50	-	0.04/0.33	700/1400	2	180	70	27	17	12	Angelo-Po FIR	32M3880 1046/4-8



No.	Part no.	voltage (V)	ph	freq. (Hz)	P (kW)	motor speed (rpm)	V	L1 (mm)	L2 (mm)	L3 (mm)	D1 ø (mm)	D2 ø (mm)	suitable for	equiv. no.
1	601210	220-240	1	50	0.08	2800	1	120	38	36	12	8	Angelo-Po FIR	32M4260 1074

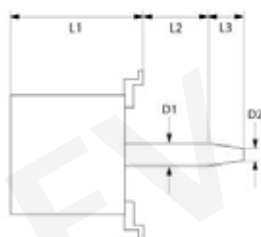


No.	Part no.	voltage (V)	ph	freq. (Hz)	P (kW)	motor speed (rpm)	V	L1 (mm)	L2 (mm)	L3 (mm)	D1 ø (mm)	D2 ø (mm)	suitable for	equiv. no.
1	601360	220	1	50	0.1	1350	1	105	66	35	10	12	Electrolux FIR Zanussi	058587 1092/M 058587
2	500629	220-240	1	50/60	0.045/0.0765	2800/3400	1	95	33	19	8	10	FIR Inoxtrend	1048 RRC3610-00
3	601104	220-240	1	50/60	0.045/0.0765	2800/3400	1	97	41	19	8	10	Angelo-Po	32M4301
4	601378	220-240/380-415	3	50	0.35	1350	1	143	91	34	10	16	Electrolux FIR Zanussi	058607 1093/V 058607

11

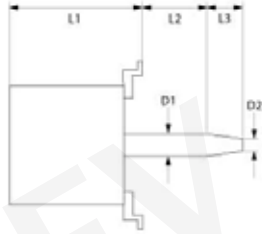
Fans

HANNING



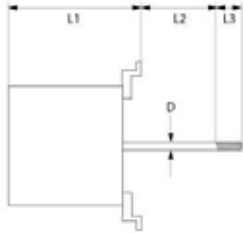
No.	Bestell-Nr.	voltage (V)	ph	freq. (Hz)	P (kW)	motor speed (rpm)	V	L1 (mm)	L2 (mm)	L3 (mm)	D1 ø (mm)	D2 ø (mm)	suitable for	equiv. no.
1	500158	200-240/346-415	3	50/60	0.4	1400/1700	1	160	30	35	17	13	Hanning Rational	L7Cw4D226 31001002
2	601350	220/380	3	50	0.16	1430	1	140	27	35	17	13	Electrolux Hanning Juno	0H6934 L7zAw4D043 0H6934
3	601351	220-230	3*	50	0.02/0.16	710/1390	2	150	27	35	17	13	Electrolux Hanning Juno	0H6556 L7mw84D149 0H6556
4	500506	220-230	3*	50	0.02/0.16	710/1390	2	152	31	35	17	13	Fagor Hanning	R663034 L7mw84D380
5	601349	220-240	1	50	0.07	2870	1	115	6	27	17	13	Electrolux Hanning Juno Wiesheu	0H6935 L7xw2B085 0H6935 33178
6	601310	220-240	1	50/60	0.16	1420/1720	1	140	40	37	17	13	Hanning Rational	L7zAw4D199 30010423
7	601320	220-240	3*	50	1	1400	1	220	30	50	25	20	Rational	3100.1069
8	601366	220-240	3*	50/60	0.02/0.16	710/1390	1	140	27	35	17	13	Electrolux Hanning Juno	0K2720 L7mw84D098 0K2720
9	500167	220-240/380-415	3	50	0.45	1400	1	150	24	35	17	13	Hanning Rational	L9Cw4D1304 31001021
10	500169	220-240/380-415	3	50	1	1400	1	190	41	37	17	13	Hanning Rational	L9FGw4D395 31001023
11	500103	220-240/380-415	3	50/60	0.25	-	1	150	32	40	17	13	Electrolux Hanning Juno Küppersbusch Zanussi	0H6929 L7Aw4D099 280157 115966 0H6929
12	500100	220-240/380-415	3	50/60	0.25	-	1	150	32	40	17	13	Hanning Küppersbusch Rational	L7Aw4D099 115950 30010400
13	601551	230/415	3	50/60	0.65	1400/1650	1	147	41	36	17	13.5	Fagor Hanning	T493017 L9Cw4D1645
14	500102	230-240	1	50	0.09	1390	1	150	32	27	17	13	Eloma Hanning Palux Rational	332410 L7yzw4B207 332410 1007.2440
15	601300	240	3	60	0.68	1730	1	145	24	34	17	13	Hanning Rational	L9DFw4D518 31001080
16	601485	240	3	60	0.68	1730	1	150	24	35	17	13	Hanning MKN	L9DFw4D596 203771
17	601308	240	3	60	0.68	1730	1	150	40	35	17	13	Hanning Rational	L9DFw4D 31001081
18	500505	254-277/440-480	3	60	0.16	1700	1	140	27	35	17	13	Fagor Hanning	R253049 L7zAw4D014
19	601352	380-400	3	50	0.02/0.16	710/1390	2	140	27	35	17	13	Electrolux Hanning Juno	0H6555 L7mw84D148 0H6555
20	500162	380-415	3	50	0.08/0.45	700/1400	2	147	35	35	17	13	Hanning Rational	L9xw84D393 3100.1049
21	601318	380-415	3	50	0.12/0.9	700/1380	2	200	40	35	17	13	Hanning Rational	L9Fw4D397 31001024
22	601504	380-415	3	50	0.12/0.9	700/1380	2	202	48	35	17	13.5	Fagor Hanning	T323022 L9zw84D565
23	601299	380-415	3	50	0.12/0.9	700/1380	2	205	40	35	17	13	Hanning Rational	L9zw84D394 31001068
24	500168	380-415	3	50	0.12/0.9	700/1380	2	205	47	35	13	-	Rational	31001022
25	500108	380-415	3	50/60	0.03/0.2	-	2	155	30	31	17	13	Electrolux Hanning Juno Zanussi	0H6930 L7mw84D097 281074 0H6930
26	500159	380-415/380-460	3	50	0.04/0.37	710/1350	2	170	30	35	17	13	Hanning Rational	L7rw84D208 31001000

* Three-phase 230V-motors can also be connected to single-phase 230V mains, by use of a capacitor. Note: This reduces motor's performance.



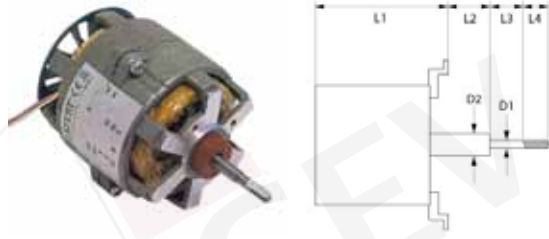
No.	Part no.	voltage (V)	ph	freq. (Hz)	P (kW)	motor speed (rpm)	v	L1 (mm)	L2 (mm)	L3 (mm)	D1 ø (mm)	D2 ø (mm)	suitable for	equiv. no.
1	601313	200-240/346-415	3	50/60	1	1400/1700	1	220	35	50	25	20	Hanning Rational	L9FGw4D227 31001007
2	601368	220	3*	50	-	-	2	175	20	50	25	20	Electrolux Hanning Juno	0K2722 L9rw84D095 0K2722
3	601369	220-240	3*	50	-	-	1	180	49	30	23	20	Electrolux Hanning Juno	0K2733 L9Cw4B061 0K2733
4	601370	220-240	3*	50	-	-	2	221	27	50	25	20	Electrolux Hanning Juno	0K2716 L9UWID13 0K2716
5	500836	220-240/380-415	3	50	0.37	1400	1	175	47	31	23	20	Electrolux Hanning	280125 L9Cw4D037
6	601293	220-240/380-415	3	50	0.37	1400	1	177	49	30	23	20	Hanning Küppersbusch	L9CW4D037 120121
7	500105	220-240/380-415	3	50	0.37	1400	1	182	26	50	25	20	Electrolux Hanning Juno Rational Zanussi	0H6932 L9Cw4D093 280161 30010405 0H6932
8	500109	220-240/380-415	3	50	0.85	1360	1	220	35	29	23	20	Hanning Küppersbusch	L9FG4D160 115980
9	500172	220-240/380-415	3	50	1	1400	1	220	34	31	23	20	Eloma Hanning	E390053 L9FGw4D363
10	500905	380-415	3	50	0.12/0.4	700/1350	2	180	49	30	23	20	Hanning Küppersbusch	L9rw84D285 120105
11	500906	380-415	3	50	0.12/0.9	700/1380	2	217	45	30	23	20	Hanning Küppersbusch	L9zw84D286 120103
12	601314	380-415	3	50	0.12/0.9	700/1380	2	230	35	50	25	20	Rational	31001001
13	601367	380-415	3	50/60	-	-	2	175	25	48	25	20	Electrolux Hanning Juno	0H6933 L9rw84D094 0H6933

* Three-phase 230V-motors can also be connected to single-phase 230V mains, by use of a capacitor. Note: This reduces motor's performance.



No.	Part no.	voltage (V)	ph	freq. (Hz)	P (kW)	motor speed (rpm)	v	L1 (mm)	L2 (mm)	L3 (mm)	ø (mm)	suitable for	equiv. no.
1	601474	230	1	50	0.03	3600	1	115	20	32	12	Hanning Palux	L5ow2B317 No.W5 693286

LAFERT



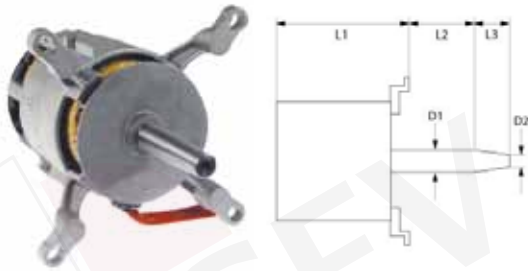
No.	Part no.	voltage (V)	ph	freq. (Hz)	P (kW)	motor speed (rpm)	V	L1 (mm)	L2 (mm)	L3 (mm)	L4 (mm)	D1 ø (mm)	D2 ø (mm)	suitable for	equiv. no.
1	500140	220-240	1	50	0.04	2800	1	98	23	10	10	7/8	6	Bertos Foinox Lainox	25118000 10701 R65040101
2	500815	220-240	1	50	0.07/0.2	950/1350	2	140	70	35	22	9/10	12	Electrolux Zanussi	058994 058994
3	601354	220-240	1	50	0.11	2760	1	130	32	30	18	7/8	9	Foinox Giorik Lainox	1100C 6032128 50405580



No.	Part no.	voltage (V)	ph	freq. (Hz)	P (kW)	motor speed (rpm)	V	L1 (mm)	L2 (mm)	L3 (mm)	D1 ø (mm)	D2 ø (mm)	suitable for	equiv. no.
1	500671	200-240	1	50/60	0.11	2760/3320	1	130	55	30	15	12	Lainox	R65040071



No.	Part no.	voltage (V)	ph	freq. (Hz)	P (kW)	motor speed (rpm)	V	L1 (mm)	L2 (mm)	L3 (mm)	D1 ø (mm)	D2 ø (mm)	suitable for	equiv. no.
1	601222	230	1	50	0.06/0.19	890/1395	2	165	49	35	10	16	Electrolux Zanussi	006998 006998
2	500142	230	1	50	0.06/0.19	930/1380	2	160	52	35	9/10	16	Electrolux Juno Zanussi	002698 002698 002698
3	500654	230	1	50	0.06/0.19	930/1380	2	165	52	35	9/10	16	Electrolux Zanussi	005028 005028
4	500144	230	1	50	0.11/0.35	900/1400	2	165	91	35	9/10	16	Electrolux Juno Zanussi	002748 002748 002748
5	500816	230	1	50	0.22/0.75	955/1460	2	175	52	32	10	16	Electrolux Zanussi	0C1171 0C1171
6	500141	230	1	50/60	0.19	1450/1750	1	150	52	35	9/10	14	Electrolux Juno Zanussi	002616 002616 002616
7	500143	230	1	50/60	0.35	1400/1700	1	165	91	35	9/10	16	Electrolux Juno Zanussi	002739 002739 002739



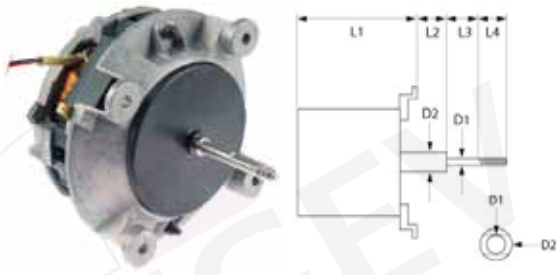
No.	Part no.	voltage (V)	ph	freq. (Hz)	P (kW)	motor speed (rpm)	V	L1 (mm)	L2 (mm)	L3 (mm)	D1 ø (mm)	D2 ø (mm)	suitable for	equiv. no.
1	500641	220/380	3	50	0.75	1420	1	166	47	65	24	20	Giorik	6033155
2	601046	220/380	3	50/60	0.75	1350/1650	1	185	42	47	24	20	Bertos Foinox Lainox	24119100 0840 R50405510
3	601229	220-240	1	50	0.09/0.37	700/1400	2	188	47	47	24	20	MBM Italien	RTFOC00066
4	601230	220-240	1	50/60	0.37	1400/1700	1	188	47	47	24	20	MBM Italien	RTFOC00697
5	500647	230	1	50	0.13/0.55	700/1400	2	188	64	46	24	20	Baron Olis	3102210 3102210
6	500649	230	1	50	0.13/0.55	700/1400	2	200	67	47	24	20	Baron Olis	3102212 3102212
7	500657	230	1	50	0.15/0.55	900/1400	2	150	45	47	24	20	Ambach Lainox	R65040540 R65040540
8	601598	230	1	50	0.22/0.55	960/1430	2	175	52	32	15	18	Angelo-Po	3001182
9	500643	230	1	50	0.25/0.75	670/1370	2	195	47	70	24	20	Giorik	6034348
10	500646	230	1	50/60	0.55	1400/1680	1	188	67	47	24	20	Baron Olis	3102200 3102200
11	500658	230/400	3	50/60	0.55	1400/1700	1	145	47	47	24	20	Lainox	R65040530
12	500644	230/400	3	50/60	0.55	1420/1700	1	188	67	46	24	20	Baron Olis	3102300 3102300
13	500652	380-415	3	50	0.13/0.55	700/1350	2	188	44	48	24	20	Bertos Foinox	0841 0841
14	500642	380-415	3	50	0.22/0.75	700/1400	2	166	45	67	24	20	Giorik	6033145
15	500645	400	3	50	0.13/0.55	720/1440	2	188	64	46	24	20	Baron Olis	3102310 3102310
16	500648	400	3	50	0.13/0.55	720/1440	2	198	65	47	24	20	Baron Olis	3103212 3103212

LGB



No.	Part no.	voltage (V)	ph	freq. (Hz)	P (kW)	motor speed (rpm)	V	L1 (mm)	L2 (mm)	D1 ø (mm)	suitable for	equiv. no.
1	601178	230	1	50	0.25	2800	1	120	77	12	Modular	66400000

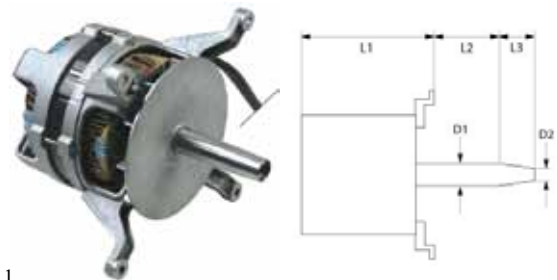
SISME



No.	Part no.	voltage (V)	ph	freq. (Hz)	P (kW)	motor speed (rpm)	V	L1 (mm)	L2 (mm)	L3 (mm)	L4 (mm)	D1 ø (mm)	D2 ø (mm)	suitable for	equiv. no.
1	500662	220-240	3*	50/60	0.12	2800/3200	1	85	7	47	12	8/6	12	Lainox Piron RM-Gastro	R65041000 MOT30002 403000200
2	601493	230	3*	50	-	-	1	85	32	28	29	8	12	Unox	KVN003
3	500964	230	3*	50	0.08	2700	1	78	7	47	12	8/6	12	Piron	MOT30004

* Three-phase 230V-motors can also be connected to single-phase 230V mains, by use of a capacitor. Note: This reduces motor's performance.

other

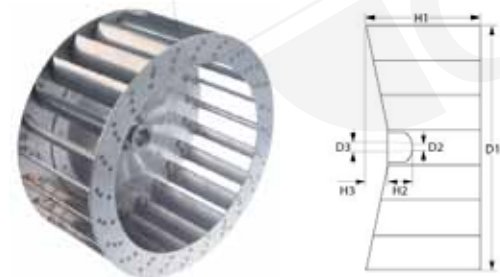


1

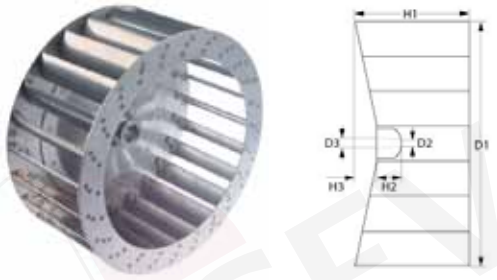
No.	Part no.	voltage (V)	ph	freq. (Hz)	P (kW)	motor speed (rpm)	V	L1 (mm)	L2 (mm)	L3 (mm)	D1 ø (mm)	D2 ø (mm)	suitable for	equiv. no.
1	601305	220-240/380-415	3	50	0.37	1410	1	160	53	32	23	20	Küppersbusch	115966

accessories

fan wheels for hot air motors



No.	Part no.	D1 ø (mm)	D2 ø (mm)	D3 ø (mm)	H1 (mm)	H2 (mm)	H3 (mm)	vanes	suitable for	equiv. no.
1	601067	150	6	6	38	14	-	36	Bertos Foinox Lainox	25647200 15007 R50405781
2	601223	150	6	6	39	13.5	-	36	Bertos Foinox	25647200 15007
3	601353	150	8	6/8	50	26	-	36	Lainox	R75400510
4	601361	160	6.5	6.5	27	10	-	12	Smeg	019290071
5	601109	160	8	8	35	15	-	12	Angelo-Po	32M0370
6	601384	160	8	8	40	26	-	30	Smeg	069290070
7	601450	160	8	8	45	24	-	36	Piron RM-Gastro	VEN30002 403000250
8	601068	160	12	16	70	29	-	16	Lainox	R50405795
9	601461	160	16	16	40	16	-	12	TurboChef	NGC-3007
10	601165	160	16	16	60	29	-	15	Foinox	1118
11	601061	160	18	18	60	35	-	15	Lainox	50405740
12	514257	164	8	8	38	28	-	36	Inoxtrend	RRC3612-00
13	601246	180	8	6	77	25.5	-	12	Lainox	R75400410
14	601221	180	9	12.5	60	35	-	12	Angelo-Po	32M4271



No.	Part no.	D1 ø (mm)	D2 ø (mm)	D3 ø (mm)	H1 (mm)	H2 (mm)	H3 (mm)	vanes	suitable for	equiv. no.
15	601060	180	11	16	60	30	-	16	Bertos Foinox Lainox	24646500 0758 R50405730
16	601202	180	11.5	16	100	30	-	16	Giorik	5901006
17	601345	180	13	15	34	28	-	18	Electrolux Juno	0H6945 0H6945
18	601363	196	8	8	37	29	-	38	Smeg	069290083
19	601489	197	8	8	32	12	-	39	Unox	KVN011
20	601487	197	8	10	60	33	-	39	Unox	KVN008
21	601187	200	8	8	40	28	-	38	Tecnoeka	11950389400
22	601560	200	8	8	45	24	-	44	Piron	VEN30003
23	601095	210	11	16	100	30	-	20	Gico	293200680
24	514265	210	11	16	100	30	-	20	Inoxtrend	RRC3068-00
25	514261	210	11	16	100	30	-	20	Inoxtrend Whirlpool	RRC2030-00 483286008701
26	601186	215	8	8	40	26.5	-	38	Tecnoeka	11950509400
27	601243	220	11	16	78	29	-	12	Ambach Lainox	R75400400 R75400400
28	601225	220	11.5	16	100	29	-	12	MBM Italien	RTFOC00473
29	601064	220	11.5	16.5	78	30	-	20	Lainox	R50405812
30	601365	225	19.5	23	60	25.5	-	12	Electrolux Juno	0G1989 0G1989
31	514262	250	11	16	120	30	-	26	Inoxtrend Whirlpool	C2430-00 483286002963
32	601215	250	11.5	16	78	30	-	20	Zanolli	VENT0001
33	601355	270	19.5	23	100	45	-	12	Gierre	VEN127
34	601062	270	19.5	23	100	46	-	24	Lainox	50405720
35	601226	270	19.5	23	120	46	-	12	MBM Italien	RTFOC00517
36	514264	270	19.5	23	120	46	-	24	Inoxtrend	RRC7167-00
37	601298	280	-	-	115	-	-	42	Küppersbusch	174256
38	601235	280	10	10	100	37	10	6	Electrolux Zanussi	054585 054585
39	601220	280	10	10	100	37	22	6	Electrolux Juno Zanussi	002754 002754 003560
40	601371	280	10	10	100	37	23	6	Electrolux Juno	002871 002871
41	601236	280	10	10	130	38	23	10	Electrolux Zanussi	007000 007000
42	601049	280	11	16	125	37	-	12	Küppersbusch Rational	407448 20120602
43	601207	280	12	18	135	55	-	12	Angelo-Po	32M3812
44	601344	280	13	16	127	37	-	12	Electrolux Juno	0H6507 0H6507
45	601096	285	19.5	23.5	140	45	-	24	Gico	293200240
46	601048	300	-	-	-	-	-	-	Lainox	R75400270
47	601242	300	19.5	23	100	46	-	12	Moretti	72807520
48	601241	300	19.5	23	100	46	-	20	Moretti Zanolli	72806860 VENT0018
49	601224	300	19.5	23	100	46	-	24	Bertos Foinox	24646900 3196
50	601065	300	19.5	23	120	46	-	20	Lainox	R50405820
51	514263	300	19.5	23.5	120	46	-	24	Inoxtrend	RRC7165-00
52	601203	310	19.5	23	100	46	-	30	Giorik	5901010
53	601097	310	19.5	23	160	46	-	24	Gico	293201100
54	514037	330	12	24	110	47	-	12	Mareno	2919900



No.	Part no.	D1 ø (mm)	D2 ø (mm)	D3 ø (mm)	H1 (mm)	H2 (mm)	H3 (mm)	vanes	suitable for	equiv. no.
55	601208	335	12	18	135	56	-	12	Angelo-Po	32M2561
56	601217	335	19.5	23	100	45	-	24	Zanolli	VENT0015
57	601213	335	19.5	23.5	135	50.5	-	16	Baron Olis	3101600 3101600
58	601214	335	19.5	23.5	135	51	-	12	Baron Olis	3101630 3101630
59	601306	340	13	16	95	37	-	9	Rational	2200188
60	601327	340	13	16	135	38	-	9	Rational	2200192
61	601233	350	10	10	135	37.5	-	6	Electrolux Zanussi	0C1129 0C1129
62	601197	350	10	10	135	38	20	6	Electrolux Zanussi	053782 053782
63	601315	350	12	16	125	36	-	12	Rational	20120900
64	514038	350	12	23	150	48	-	16	Mareno	2939414
65	514039	350	12	23.5	190	47	-	16	Mareno	5103414
66	601503	350	13	16	125	-	-	12	Fagor	R253042
67	601322	350	13	16	125	37	-	12	Rational	20120507
68	601343	350	13	16	127	37	-	6	Electrolux Juno	0H6510 0H6510
69	601323	350	13	16	135	45	-	12	Rational	20120512
70	601311	350	13	16.5	125	37	-	12	Rational	2012.0500
71	601063	350	19.5	23	100	46	-	24	Bertos Foinox Lainox	0759 0759 R50405710
72	601244	350	19.5	23	114	45	-	12	Ambach Lainox	R75400440 R75400440
73	601227	350	19.5	23	120	45	-	12	MBM Italien	RTFOC00314
74	601204	350	19.5	23	135	46	-	30	Giorik	5901022
75	601066	350	19.5	23.5	120	45	-	24	Lainox	R75400380
76	601303	355	20	22	127	48	-	42	Küppersbusch	174257
77	601234	380	10	10	170	38	19	12	Electrolux Zanussi	0C1172 0C1172
78	601304	400	-	-	127	-	-	-	Küppersbusch	174265
79	601209	400	12	18	135	54	-	20	Angelo-Po	32M3992
80	601218	440	10	10	152	37	31	6	Electrolux Zanussi	054014 054014
81	601232	440	10	16	155	51	39	6	Electrolux Zanussi	003715 003715
82	601502	450	13	17	160	-	-	12	Fagor	T303015
83	601324	450	13.5	17	155	45	-	12	Rational	20120508
84	601325	450	14	17	165	45	-	12	Rational	20120513
85	601342	450	19.5	23.5	178	45	-	6	Electrolux Juno	0H6947 0H6947

flanges



No.	Part no.	ext. ø (mm)	int. ø 1 (mm)	int. ø 2 (mm)	t (mm)	material	suitable for	equiv. no.
1	550855	35	22	8	8	brass	Lainox	R58005510
2	550860	35	22	9	8	brass	Lainox	R58005500
3	601466	44.5	-	16	6.5	steel	TurboChef	700-0306-2
4	550049	60	27.3	18.5	5.8	brass	Inoxtrend Whirlpool	C2029-00 483286008699



No.	Part no.	ext. ø (mm)	int. ø 1 (mm)	int. ø 2 (mm)	t (mm)	material	suitable for	equiv. no.
5	691680	60	28	19	20	SS	Fagor	R662623
6	510539	60	30	20	3	brass	Küppersbusch	146193
7	691810	48	19.5	15	3.5	brass	Foinox	0692
8	550757	48	24	15	5	brass	Foinox	0693



No.	Part no.	ext. ø (mm)	int. ø 1 (mm)	int. ø 2 (mm)	t (mm)	material	suitable for	equiv. no.
9	550856	50	19.5	16	3	brass	Ambach Lainox	R58003860 R58003860
10	550857	50	25	16	6	brass	Ambach Lainox	R58003870 R58003870
11	510587	60	24	18.5	3	steel	Rational	20160876
12	510588	60	32	26	3	steel	Rational	20160875



No.	Part no.	ext. ø (mm)	int. ø 1 (mm)	int. ø 2 (mm)	t (mm)	material	suitable for	equiv. no.
13	550852	60	28.5	24.5	3.5	brass	Bertos Foinox	0690 0690
14	550854	60	34.5	24.6	5.1	brass	Bertos Foinox	0691 0691



No.	Part no.	ext. ø (mm)	int. ø 1 (mm)	int. ø 2 (mm)	t (mm)	material	suitable for	equiv. no.
14	550854	60	34.5	24.6	5.1	brass	Bertos Foinox	0691 0691
15	550858	60	28.5	25	4	brass	Ambach Lainox	R58003840 R58003840
16	550859	60	34	25	6	brass	Ambach Lainox	R58003850 R58003850
17	693495	60	35	26	3	brass	Küppersbusch	146769

gaskets



No.	Part no.	int. ø (mm)	ext. ø (mm)	suitable for	equiv. no.
1	510533			Küppersbusch	146361
2	511170	7	22	Lainox	R50505895
3	550861	7.5	22	Lainox	R70020020

No.	Part no.	int. ø (mm)	ext. ø (mm)	suitable for	equiv. no.
4	550686	12	58	Angelo-Po	37Q0250
5	511171	14.5	20	Ambach Lainox	R70020040 R50505880



No.	Part no.	int. ø (mm)	ext. ø (mm)	suitable for	equiv. no.
6	511301	16	38	Electrolux Zanussi	002699 002699
7	511302	16	40	Electrolux Juno Zanussi	0H6643 246195 0H6643
8	691049	17	28	Fagor	R662627

No.	Part no.	int. ø (mm)	ext. ø (mm)	suitable for	equiv. no.
9	510573	17	29	Rational	50010207
10	510541	17.3	25	Küppersbusch	146195



No.	Part no.	int. ø (mm)	ext. ø (mm)	suitable for	equiv. no.
11	511314	19	30	Electrolux Juno	0700268254 0H6862
12	510537	20	29.5	Küppersbusch	146194

No.	Part no.	int. ø (mm)	ext. ø (mm)	suitable for	equiv. no.
13	510540	23	29.6	Küppersbusch	146360
14	550853	24	29	Bertos Foinox	0688 0688



No.	Part no.	int. ø (mm)	ext. ø (mm)	suitable for	equiv. no.
15	511172	24	29	Ambach Lainox	R70020050 R50505890
16	550849	24	36	Baron Olis	3102400 3102400
17	511303	27	40	Electrolux Juno	0H6644 0H6644

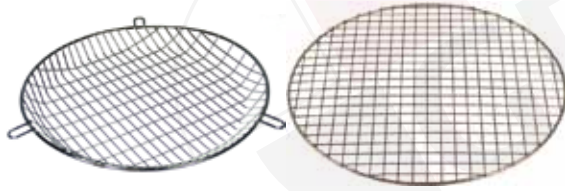
No.	Part no.	int. ø (mm)	ext. ø (mm)	suitable for	equiv. no.
18	511300	29	35	Electrolux Zanussi	002699 002699
19	511315	29	40	Electrolux Juno	0700237259E 0H6513



No.	Part no.	int. ø (mm)	ext. ø (mm)	suitable for	equiv. no.
20	503149	32	60	Eloma	427010
21	550689	40	58	Angelo-Po	37Q3011

No.	Part no.	int. ø (mm)	ext. ø (mm)	suitable for	equiv. no.
22	510542	42	61	Küppersbusch	062131

grids for hot-air motors



No.	Part no.	Description	suitable for	equiv. no.
1	691155	protective grid ø 230mm for hot air motors	Angelo-Po	37M3820
2	514378	protective grid ø 260mm	Electrolux	005291